



Date: 04/20/12

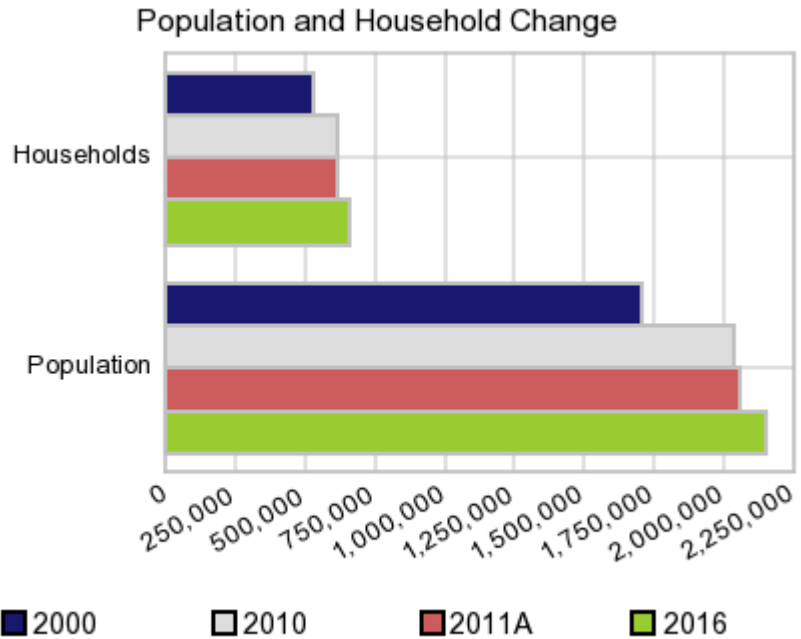
Current Geography Selection: (1 Selected) Counties: San Bernardino County

## Executive Summary Report with Charts

### Population Demographics:

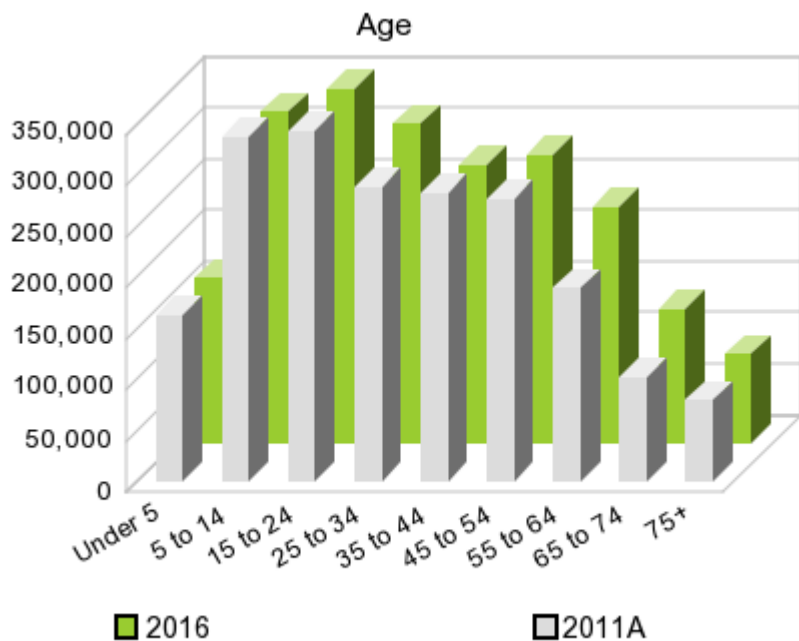
The number of households in the study area in 2000 was **528,594** and changed to **611,618** in 2010, representing a change of **15.7%**. The household count in 2011A was **621,004** and the household projection for 2016 is **658,614**, a change of **6.1%**.

The population in the study area in 2000 was **1,709,434** and in 2010 it was **2,035,210**, roughly a **19.1%** change. The population in 2011A was **2,057,219** and the projection for 2016 is **2,145,434** representing a change of **4.3%**.



	2000 Census	2010 Census	2011A Estimate	2016 Projection	Percent Change	
					2000 to 2010	2011 to 2016
Total Population	1,709,434	2,035,210	2,057,219	2,145,434	19.1%	4.3%
Total Households	528,594	611,618	621,004	658,614	31.6%	6.1%

### Population by Age



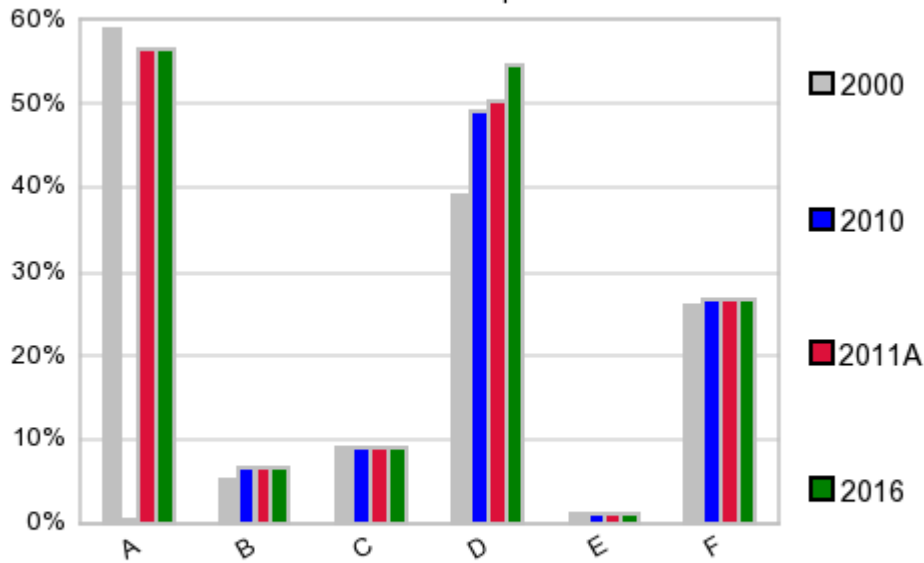
In 1990, the median age of the total population in the study area was **29**, and in 2000, it was **30**. The median age in 2011A is **31** and it is predicted to change in five years to **33** years. In 2011A, females represented **49.8%** of the population with a median age of **32** and males represented **50.2%** of the population with a median age of **30** years. In 2011A, the most prominent age group in this geography is **Age 5 to 14** years. The age group least represented in this geography is **75 +** years.

**Age Groups\***

	1990		2000		2011A		2016		Percent Change	
	Census	%	Census	%	Estimate	%	Projection	%	1990 to 2000	2011 to 2016
0 to 4	138,335	9.8%	143,076	8.4%	162,329	7.9%	161,088	7.5%	3.4%	-0.8%
5 to 14	240,983	17.0%	322,062	18.8%	336,483	16.4%	323,203	15.1%	33.6%	-3.9%
15 to 19	102,110	7.2%	141,130	8.3%	176,254	8.6%	170,471	8.0%	38.2%	-3.3%
20 to 24	112,178	7.9%	121,579	7.1%	165,550	8.0%	174,936	8.2%	8.4%	5.7%
25 to 34	271,972	19.2%	243,028	14.2%	288,460	14.0%	312,445	14.6%	-10.6%	8.3%
35 to 44	213,014	15.0%	272,633	15.9%	281,386	13.7%	273,116	12.7%	28.0%	-2.9%
45 to 54	122,356	8.6%	203,670	11.9%	276,013	13.4%	281,822	13.1%	66.5%	2.1%
55 to 64	92,497	6.5%	115,797	6.8%	189,908	9.2%	230,509	10.7%	25.2%	21.4%
65 to 74	75,724	5.3%	81,244	4.8%	102,339	5.0%	130,275	6.1%	7.3%	27.3%
75 +	49,182	3.5%	65,215	3.8%	78,607	3.8%	87,784	4.1%	32.6%	11.7%

**Population by Race/Ethnicity**

### Race and Ethnicity Percent Composition



In 2011A, the predominant race/ethnicity category in this study area is **White**. The race & ethnicity category least represented in this geography is **American Indian, Alaska Native**.

A: White  
 B: Asian Pac Islidr  
 C: Black  
 D: Hispanic  
 E: Amer Indian or Alaska Native  
 F: Other or Multi Race

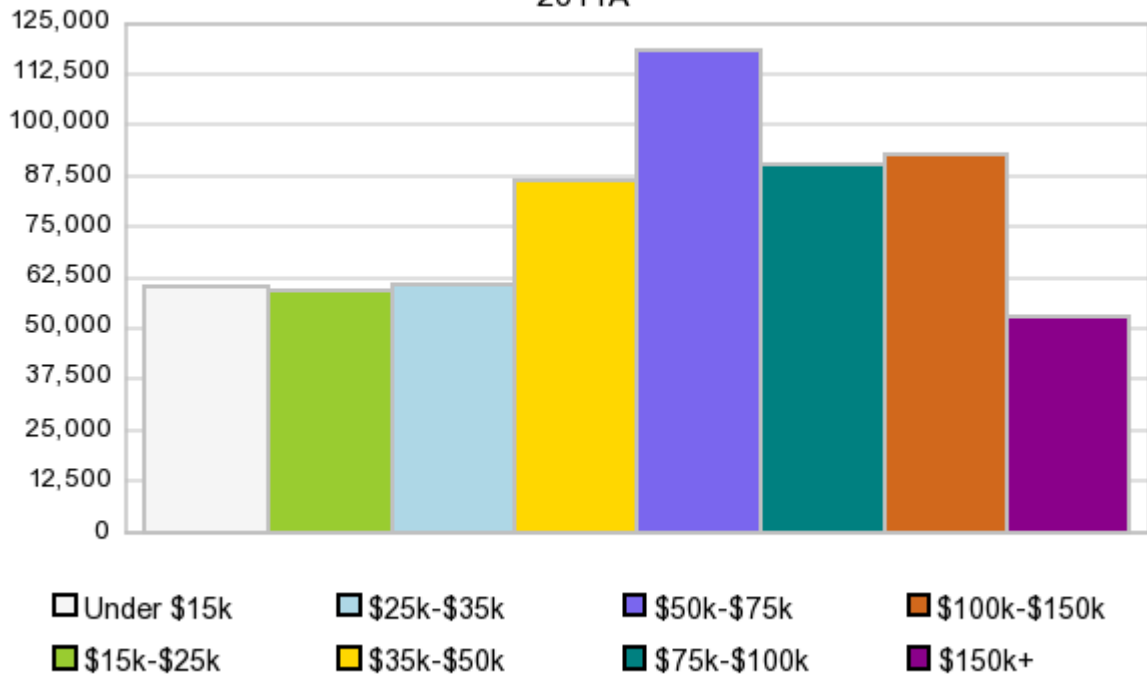
### Race & Ethnicity

	2000		2010		2011A		2016		Percent Change	
	Census	%	Census	%	Estimate	%	Projection	%	2000 to 2010	2011 to 2016
White	1,006,960	58.9%	1,153,161	56.7%	1,165,217	56.6%	1,213,621	56.6%	14.5%	4.2%
Black	155,348	9.1%	181,862	8.9%	184,030	9.0%	192,704	9.0%	17.1%	4.7%
American Indian or Alaska Native	19,915	1.2%	22,689	1.1%	22,904	1.1%	23,767	1.1%	13.9%	3.8%
Asian/Hawaiian/PI	85,327	5.0%	135,473	6.7%	137,172	6.7%	144,033	6.7%	58.8%	5.0%
Some Other Race	355,843	20.8%	439,661	21.6%	432,013	21.0%	450,777	21.0%	23.6%	4.3%
Two or More Races	86,041	5.0%	102,364	5.0%	115,876	5.6%	120,551	5.6%	19.0%	4.0%
Hispanic Ethnicity	669,387	39.2%	1,001,145	49.2%	1,035,327	50.3%	1,172,094	54.6%	49.6%	13.2%
Not Hispanic or Latino	1,040,047	60.8%	1,034,065	50.8%	1,021,876	49.7%	973,348	45.4%	-0.6%	-4.7%

### Households by Income

### Households by Income Group 2011A

In 2011A the predominant household income category in this study area is **\$50K - \$75K**, and the income group that is least represented in this geography is **\$150K +**.



#### HH Income Categories\*

	1990 Census		2000 Census		2011A Estimate		2016 Projection		Percent Change	
		%		%		%		%	1990 to 2000	2011 to 2016
\$0 - \$15,000	95,511	20.6%	82,764	15.7%	59,938	9.7%	53,244	8.1%	-13.3%	-11.2%
\$15,000 - \$24,999	73,905	15.9%	68,717	13.0%	59,198	9.5%	56,618	8.6%	-7.0%	-4.4%
\$25,000 - \$34,999	72,306	15.6%	66,482	12.6%	61,130	9.8%	59,747	9.1%	-8.1%	-2.3%
\$35,000 - \$49,999	91,895	19.8%	88,186	16.7%	86,154	13.9%	85,395	13.0%	-4.0%	-0.9%
\$50,000 - \$74,999	84,537	18.2%	107,655	20.4%	118,356	19.1%	121,670	18.5%	27.3%	2.8%
\$75,000 - \$99,999	28,626	6.2%	56,876	10.8%	90,313	14.5%	103,553	15.7%	98.7%	14.7%
\$100,000 - \$149,999	12,587	2.7%	41,306	7.8%	93,015	15.0%	112,713	17.1%	228.2%	21.2%
\$150,000 +	5,341	1.2%	16,608	3.1%	52,929	8.5%	65,645	10.0%	211.0%	24.0%
Average Hhld Income	\$40,002		\$53,065		\$73,662		\$85,237		32.7%	15.7%
Median Hhld Income	\$33,435		\$42,395		\$58,497		\$65,014		26.8%	11.1%
Per Capita Income	\$13,282		\$16,409		\$23,093		\$27,100		23.5%	17.4%

\*This Census 2010 data has not yet been released

Current year data is for the year **2011**, 5 year projected data is for the year **2016**. More About Our Data.  
Demographic data © 2011 by Experian/Applied Geographic Solutions.

Business List data © 2011 by D&B®. All rights reserved. All D&B information is powered by DUNSRight™, D&B's Quality Process.

Alteryx, DemographicsNow.com and the Alteryx and DemographicsNow.com logos are trademarks of Alteryx, Inc.  
All rights reserved.

Privacy Statement | License Agreement